

Radio Kits, Inc.

Model: S5C

Chassis:

Year: Pre 1949

Power:

Circuit:

IF:

Tubes:

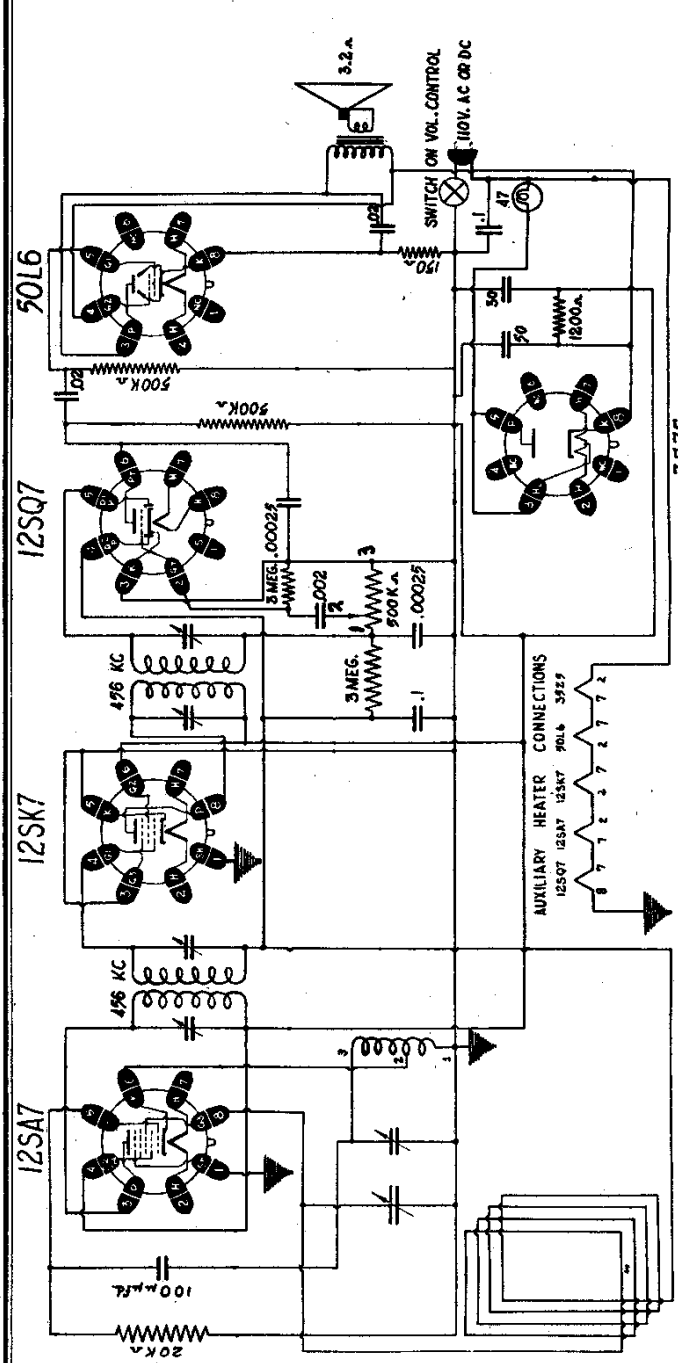
Bands:

Resources

Riders Volume 17 - RADIO KITS 17-1

Riders Volume 17 - RADIO KITS 17-2

Riders Volume 17 - RADIO KITS 17-3



ALIGNMENT AND TESTING

- A. Check wiring.**
1. It is advisable to check wiring before plugging tubes into receiver. After check-up is complete, plug tubes in their respective sockets.
 2. If an ohm meter is available, the resistance through the line cord should read about 125 ohms.
 3. Now radio is ready to be plugged in.
- B. Aligning by Signal Generator.**
1. If a signal generator is available, it will facilitate adjustment of the receiver and insure maximum sensitivity. The high side of the signal generator (ungrounded side) should be connected to the large section of the variable (RF section) Short out the small section of variable by connecting it to ground with a piece of bare wire, and set signal generator to 456Kc. Adjust the I.F. trimmer condenser for maximum response; adjusting the attenuation of signal generator progressively as the signal becomes louder.
Remove short from oscillator section of variable and connect signal generator to loop antenna. Set signal generator to 1400 Kc — set radio at 1400 Kc. Adjust trimmer condenser on oscillator section of variable condenser for maximum signal at that frequency. Adjust antenna section of variable condenser trimmer for maximum response.

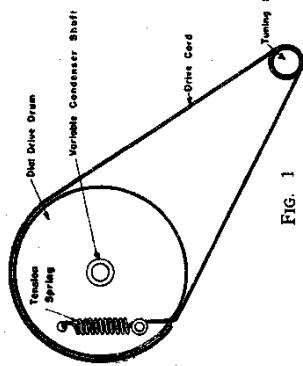


Fig. 1

Wind Drive Cord 2 1/2 times around tuning shaft

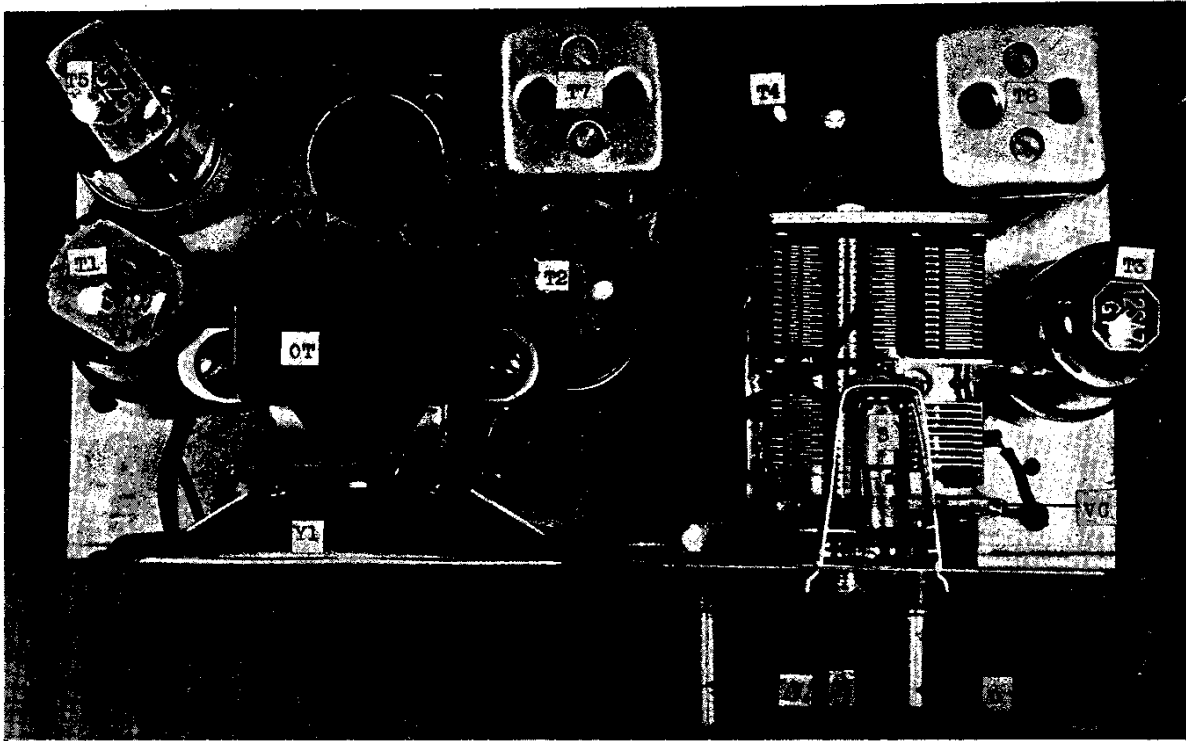
SOCKET VOLTAGES

TUBE	POSITION	1	2	3	4	5	6	7	8
12SA7GT	Osc. and Mixer	0	37.5 AC	99	99	-4.2	0	24.5 AC	0
12SK7GT	IF Amplifier	0	24.5 AC	0	0	0	99	12.5 AC	99
12SQ7GT	2nd Det.—1st Audio	0	0	0	0	0	0	16	12.5 AC
50L6GT	Power Output	0	85 AC	91.5	99	0	0	37.5 AC	5.9
35Z5GT	Rectifier	0	117 AC	112 AC	0	112 AC	0	85 AC	112

NOTE: All DC voltages measured with a 100 ohm per volt meter from ON-OFF switch (—B) to socket contact indicated. All AC voltages are measured from ON-OFF switch (—B) to socket contact indicated.

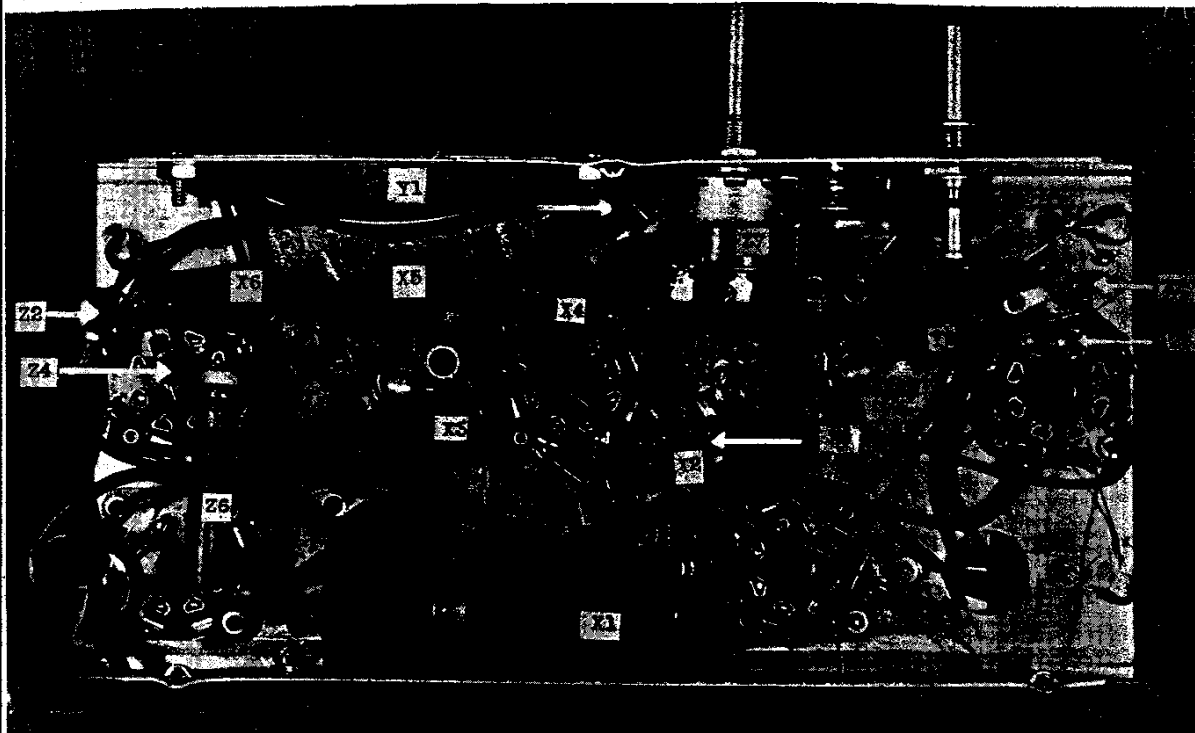
MODEL S5C

RADIO KITS, INC.



PHOTOGRAPH OF TOP VIEW OF RADIO KIT MODEL S-5C

LEGEND: T1, Tube 50L6; T2, Tube 12SQ7; T3, Tube 12SA7; T4, Tube 12SK7; T5, Tube 35Z5; OT, Output Transformer; VC, Variable capacitor; Y1, Speaker; V, Volume Control; D, Dial Drive; P, Pointer; S, Pilot light socket; T7, Output I F trans.; T8, Input I F trans.

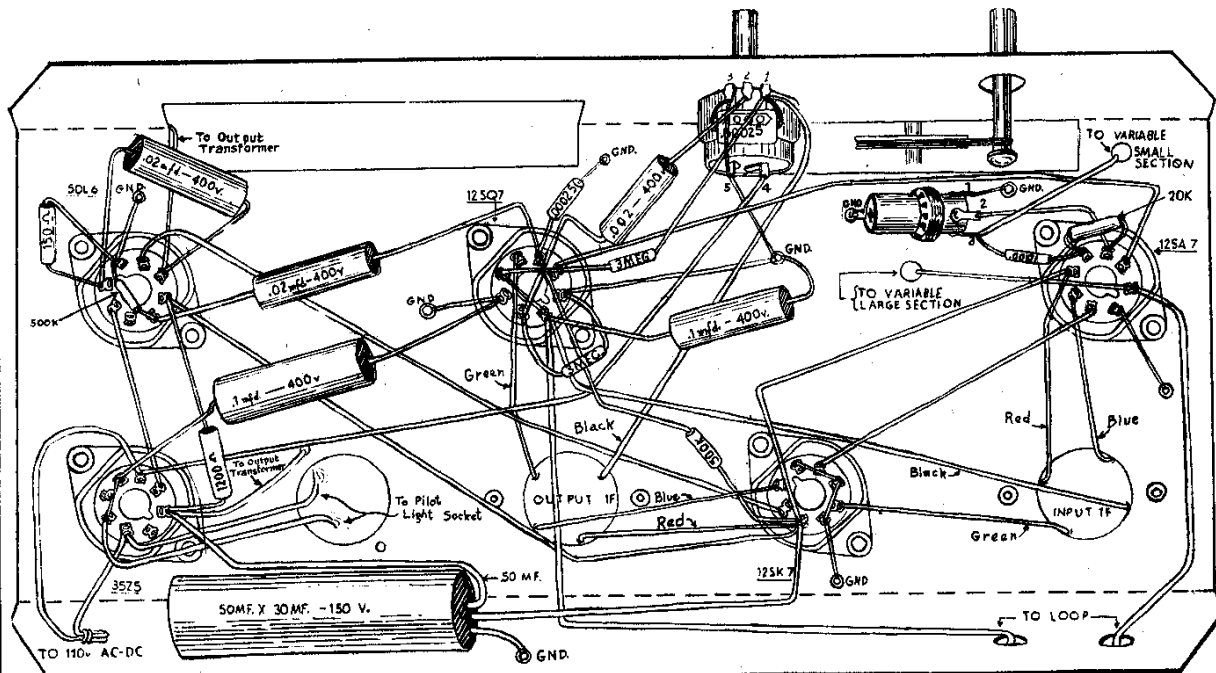


PHOTOGRAPH OF BOTTOM VIEW OF RADIO KIT MODEL S-5C

LEGEND X1, 50 mfd X 30 mfd 150 volts; X2, .1 mfd 400 volts; X3, .1 mfd 400 volts; X4, .002 mfd 400 volts; X5, .02 mfd 400 volts; X6, .02 mfd 400 volts; Z1, .0001 mfd 400 volts; Y1, Speaker; Y2, Oscillator; Z2, 150 ohms; Z3, 3 megohms; Z4, .5 megohms; Z5, 20,000 ohms; Z6, 1,200 ohms; Z7, Volume control.

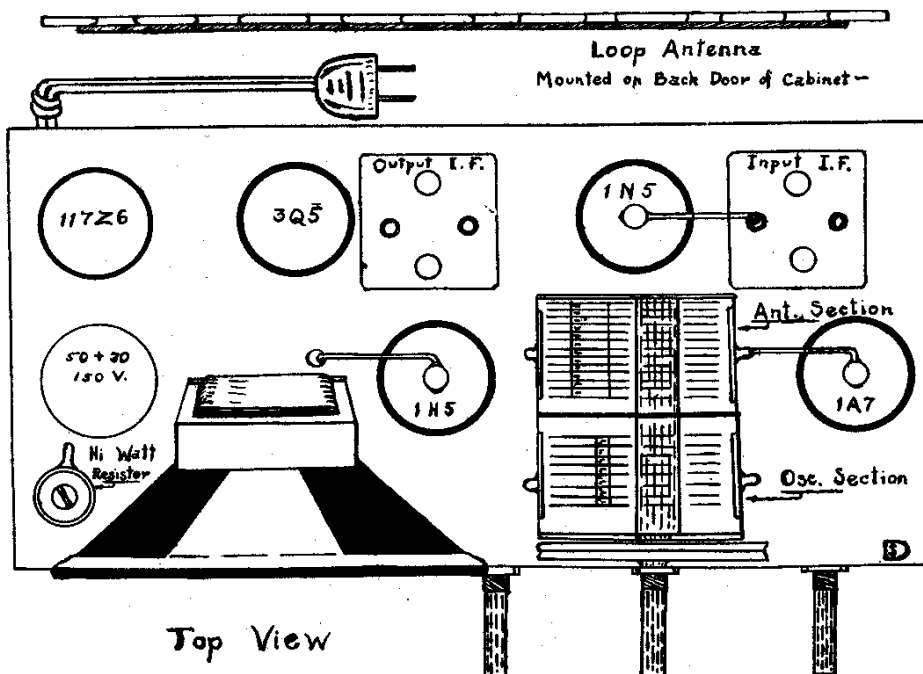
RADIO KITS, INC.

MODEL S5C
MODEL 210



PICTORIAL DIAGRAM OF MODEL S-5C

Model 210



Top View