

R.C.A. Victor Co., Inc.

Model: 26X3

Chassis:

Year: Pre 1945

Power:

Circuit:

IF:

Tubes:

Bands:

Resources

Riders Volume 14 - RCA 14-69

RCA MFG. CO., INC.

CHANGES, NOTES

14BT

Battery Cable Change:

In some 14BT production, the +A wire in the battery cable is black or black with red tracer instead of brown.

14X2 (RC-1001D)

Service Data:

The Service Data for Model 14X applies to Model 14X2, except for the following parts used in 14X2:

Stock No.	Unit List Price
38816 Back—Cabinet back.....	.25
Y1140 Cabinet	4.50
35071 Knob—Control knob.....	.15

RL-86-A3 "EM" speaker is used in some production of 14X2, as specified elsewhere in this supplement.

15X, 16X-1, -2, -3

Dial Back Plate:

In some production, the dial back plate and pulley assembly is changed from "garnet maroon," Stock No. 36229, to "Black," Stock No. 38787.

Capacitor Changes:

In 2nd Production, the following capacitors are changed:

C5 from 120 to 150 mmfd., Stock No. 12725
C8 from .015 to .02 mfd., Stock No. 36248
C9 from 120 to 300 mmfd.

C9 is built in with C10 (.005 mfd.) and the stock number of the dual unit is 37359.

15X, 16X-1, -2, -3, -4, -11, -13, -14

Speakers RL-81-A5, RL-81-B2, 92161-1, 92161-3:

Four different speakers have been used on these models. The replacement parts are listed below:

SPEAKERS STAMPED
"RL-81-A5" or "RL-81-B2"

Stock No.	Description	Unit List Price
32907	Cap—Dust cap.....	.02
35570	Cone—Cone complete with voice coil.....	1.20

SPEAKERS STAMPED
"92161-1" or "92161-3"

38352	Cone—Cone complete with voice coil.....	1.35
-------	---	------

15X, 16X-1, 16X-2

Substitute Speaker:

On 2nd Production of 15X, 16X-1, 16X-2, RL-86-B1 "EM" speaker is used in place of the original RL-81-A5 "PM" speaker. Replacement parts for the RL-86-B1 speaker are listed below. The alternate circuit arrangements are shown in accompanying diagrams.

RL-86-B1

Stock No.	Description
32907	Cap—Dust cap.....
39448	Coil—Field coil, 350 ohms.....
39447	Cone—Cone and voice coil.....

The output transformer for this speaker is Stock No. 38994.

17K

Dial Frame is Stock No. 38784:

In the Service Data for Model 17K, change the Stock Number of the Dial Frame from 35799 to 38784.

24BT-1

Substitute Speakers:

The following speakers may have been used as a substitute for Speaker RL-85-6 in Model 24BT-1.

Number Stamped on Speaker	Cone and Voice Coil Stk. No.	Output Trans.
92161-3	38352	39538
92161-4	39535	39538
92161-5	39532	39538
92322-2	39536	39538
92374-1	39537	39538
RL-81-B2	35570	39538

Dust cap for above is No. 32907.

24BT-2, 25BT-2

Speakers RL-85-5, RL-85-6, 92377-1, 92377-3:

Four different speakers have been used on these models. The replacement parts are listed below:

Stock No.	Description (RL-85-5, RL-85-6)
32907	Cap—Dust cap.....
38397	Cone—Cone complete with voice coil.....
33779	Transformer—Output transformer.....
(92377-1)	
39849	Cone—Cone complete with voice coil.....
39850	Transformer—Output transformer.....
(92377-3)	
39965	Cone—Cone complete with voice coil.....
39966	Transformer—Output transformer.....

NOTE: If number stamped on your speaker frame does not appear on above list, order part required by description giving number stamped on your speaker and receiver model.

25BT-2, 25BT-3, 25BK

Delete Speaker Plug and Socket:

In Replacement Parts, delete speaker plug No. 36009, and socket No. 14275.

25BK

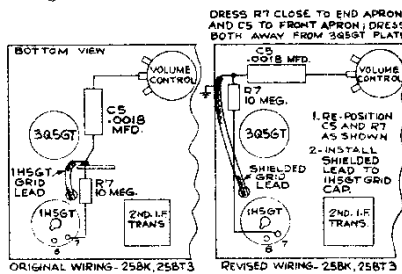
8-inch Round Speaker No. 92378-1:

Change the description and identifying number of the speaker in Model 25BK Service Note from 92355-1 (8 1/2-inch elliptical) to 92378-1 (8-inch round).
The cone, Stock No. 39066, applies to No. 92378-1 speaker.

25BK, 25BT3

Reducing Minimum Volume:

When these models are used near strong local stations, the minimum volume may be too high. This can be remedied by re-positioning the 1H5-GT 1st-audio grid capacitor (C5) and grid resistor (R7), and installing a shielded lead to the grid cap of the 1H5-GT tube. These changes are shown in the accompanying drawing.



Changes to Reduce Minimum Volume in 25BK and 25BT3.

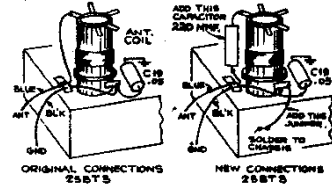
Distortion on Locals:

In Models 25BK and 25BT3, distortion on strong local stations (even with volume control turned low) may be caused by "front-end" overloading due to excessive signal strength. This can be corrected by using a shorter antenna, or by connecting a small capacitor (about 50 mmfd.) in series with the antenna.

25BT3

Hum Modulation with CV-42:

The changes shown in the accompanying sketch are recommended to eliminate hum modulation when using Model 25BT3 with CV-42 "Electrifier." These changes may be made without removing the chassis from the cabinet, and require the addition of only one part, a 220 mmfd. mica mobile capacitor.



Circuit Revisions in Model 25BT3 to Eliminate Hum Modulation When Using CV-42 "Electrifier".

25BP

Speakers RL-81-B1, RL-81-B2, 92161-1:

The above speakers were used on the 25BP in addition to those listed in the Service Note. Use Output Transformer Stock No. 39588 with all speakers used in the 25BP, except: when using a speaker stamped RL-81-B1 use Output Transformer Stock No. 36098.
The replacement parts are listed below:

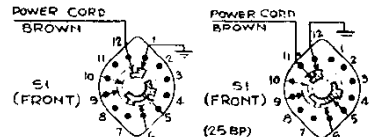
Stock No.	Description (RL-81-B1, RL-81-B2)
32907	Cap—Dust cap.....
35570	Cone—Cone complete with voice coil.....
(92161-1)	
38352	Cone—Cone complete with voice coil.....

NOTE: If number stamped on your speaker frame does not appear on above list, order part required by description giving number stamped on your speaker and receiver model.

25BP—2ND PROD. (RC-1020)

Power Switch Change:

In some second production 25BP (RC-1020), the power switch differs from that shown in the Service Note. Connections to clips numbered 12 and 1, on wafer S1—Front, of the switch shown in the Service Note, are to numbers 11 and 12 respectively on the other switch used in this production. All other connections are as shown in the Service Note Schematic.



Two Types Power Switch, Model 25BP—2nd Production

26X-1, -3, -4 Changes in 2nd Production:

In 26X-1 and 26X-3, a 10-mmfd. capacitor, Stock No. 13200, is added in parallel to C24 in the "C" band oscillator circuit.

The Stock No. for C4 (47 mmfd.) oscillator grid capacitor is 13141.

The adjustable core on L5 antenna coil is omitted, and this adjustment is therefore omitted in the alignment procedure.

Q27 (RC-507K) Service Data:

Model Q27 is similar to Model Q25 which is described in the Service Note for Models Q22, QK23, and Q25. Replacement parts for Q27 are same as for Q25, with exception of the following parts used in Q27:

CHASSIS ASSEMBLIES (RC-507K)		
37976	Bracket—Tone control mounting bracket.....	.25
38409	Control—Tone control.....	1.00
38412	Control—Volume control and power switch.....	2.00
32634	Cord—Drive cord (approx. 29-in. overall length).....	.10
13988	Resistor—10 ohms, 1/4 watt.....	.20
14350	Screw—No. 8-32 sq. head set screw for drive drum.....	.08
35787	Socket—Phono input socket.....	.15
31261	Spring—Retaining spring for adjustable cord and studs.....	.01
38761	Support—L.H. pulley support complete with pulley.....	.50
38762	Support—R.H. pulley support complete with 3 pulleys.....	.75
35588	Transformer—Power transformer—105-120 volts, 25 cycle.....	6.80
SPEAKER ASSEMBLIES (92311-1)		
38765	Coil—Field coil—1060 ohms.....	2.70
38766	Cone—Cone complete with voice coil.....	2.10
5039	Plug—4-prong male plug for speaker.....	.30
18374	Transformer—Output transformer.....	1.65